

**CHARLES ANDERSON MEMORIAL BRIDGE
ADJACENT PROPERTY OWNERS MEETING
09/24/2019**



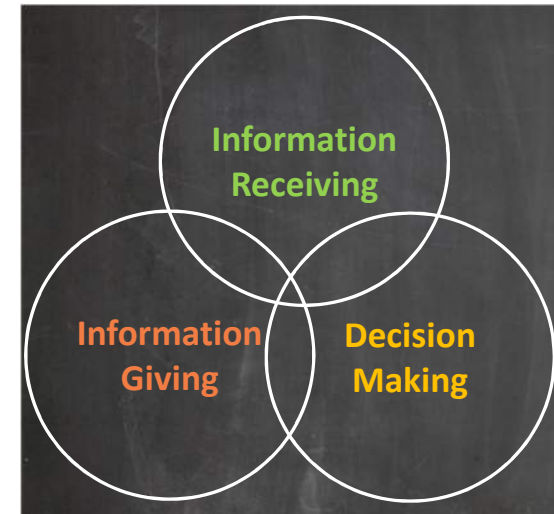
Charles Anderson Memorial Bridge

Welcome



Meeting Purpose and Format

- Purpose:
 - To understand your concerns and hopes for the Rehabilitation or Replacement of the Charles Anderson Memorial Bridge
- Format:
 - Short overview of the project
 - Group discussion



Introductions

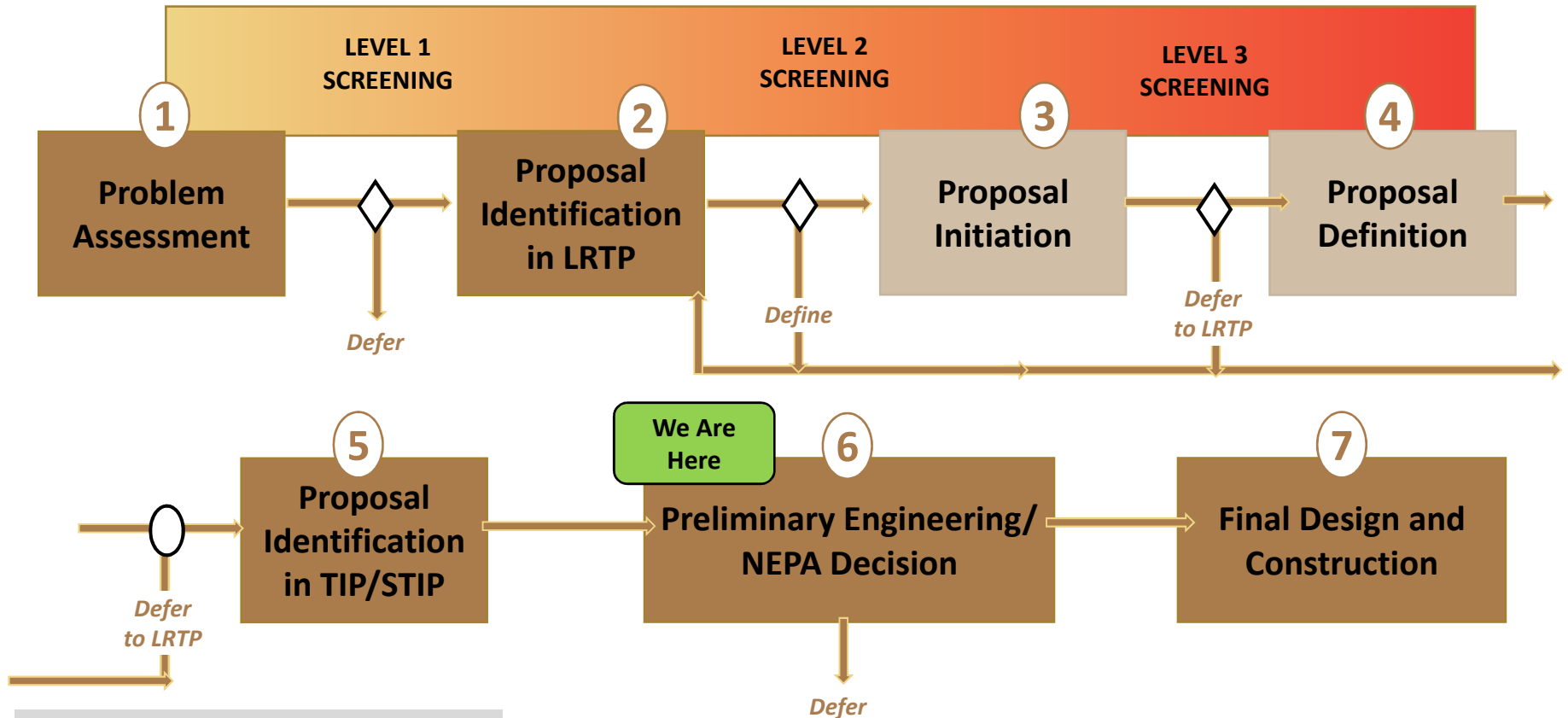
- Introductions
- Please state your name and what organization you represent



Transportation Program Development and Project Delivery Process



Source: Publication 10B, Design Manual Part 1B
Post-TIP NEPA Procedures, November 2015



Funding

- FHWA (80%)
- PennDOT (15%)
- City of Pittsburgh (5%)

◇ Decision Point

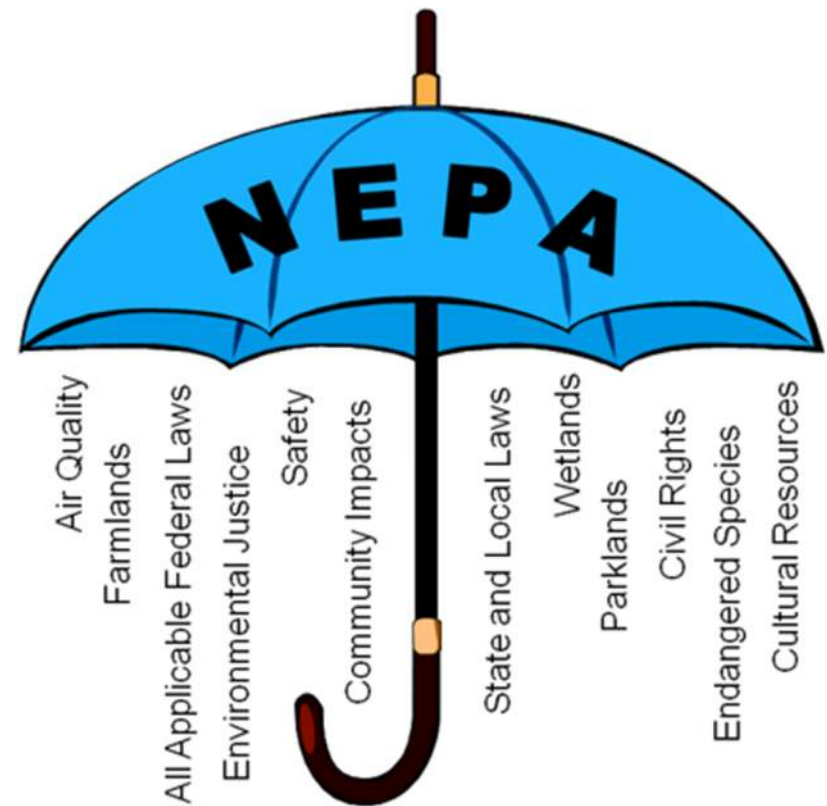
○ Go/No Go Decision at the completion of the Definition Phase for the MPO/RPO

- Based upon results of further definition, either program project on the TIP or defer it based on current available information.

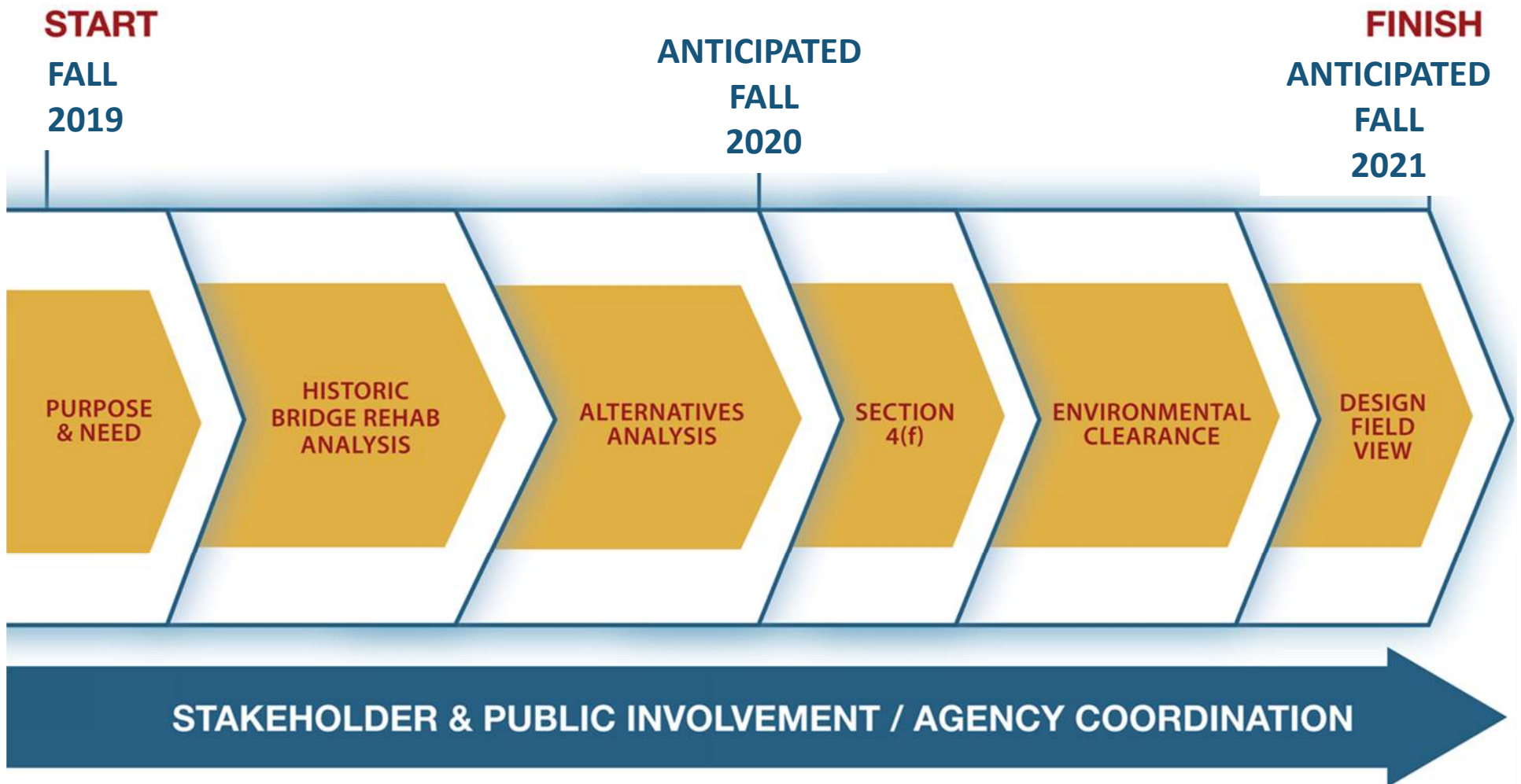
NEPA Requirements

National Environmental Policy Act of 1969 (NEPA)

- Federal law that outlines policies to protect the environment
- Must consider the effects on the quality of human environment
- The Charles Anderson Memorial Bridge project will adhere to NEPA



Preliminary Engineering & Environmental Timeline



Project Overview

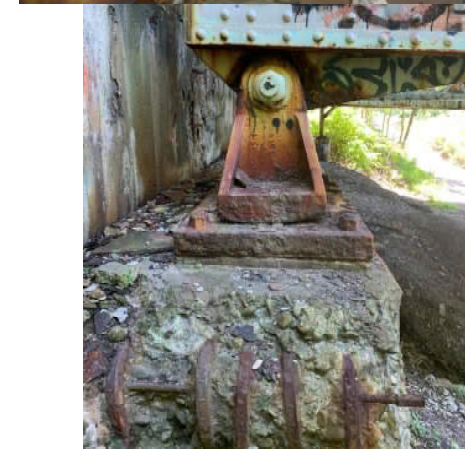
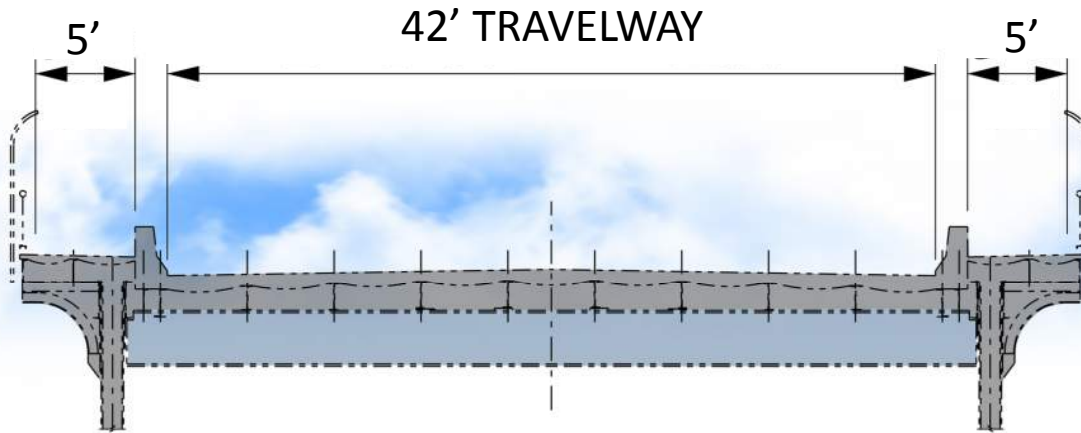
- Rehabilitation or Replacement of the Charles Anderson Memorial Bridge
- Bridge is eligible for the National Register of Historic Places



Project Location



Existing Bridge Condition



- Concrete Deck Condition – Poor
 - Advanced deterioration
 - Full depth deck cracking at gutterlines
- Steel Truss Superstructure Condition – Poor
 - Advanced section loss throughout the structure including connection areas
- Concrete Substructure Condition – Poor
 - Numerous delaminations and spalls with exposed rebar throughout



Group Guidelines



- One shared goal, many perspectives to consider
- Everyone participates
- Different opinions welcome and respected
- Don't talk over others
- Limit side conversations
- Cell phones silent
- Stay on point



Group Input

- Please help us understand your interests and needs. Tell us about the importance of the bridge as it relates to each of the following:
 1. What is the importance of the bridge as it relates to public transportation?
 2. What is the importance of the bridge as it relates to bicycle or pedestrian use?
 3. Are there transportation operations (such as signals, future detours or corridor management) that we should consider?
 4. What accommodations do you believe will be necessary for emergency services?
 5. Do you have existing community's plans that may be impacted by the bridge?
 6. What other interests or concerns do you have?

- Thematic Overview of Feedback



Wrap Up

- Next Steps
- Thank You for your input!