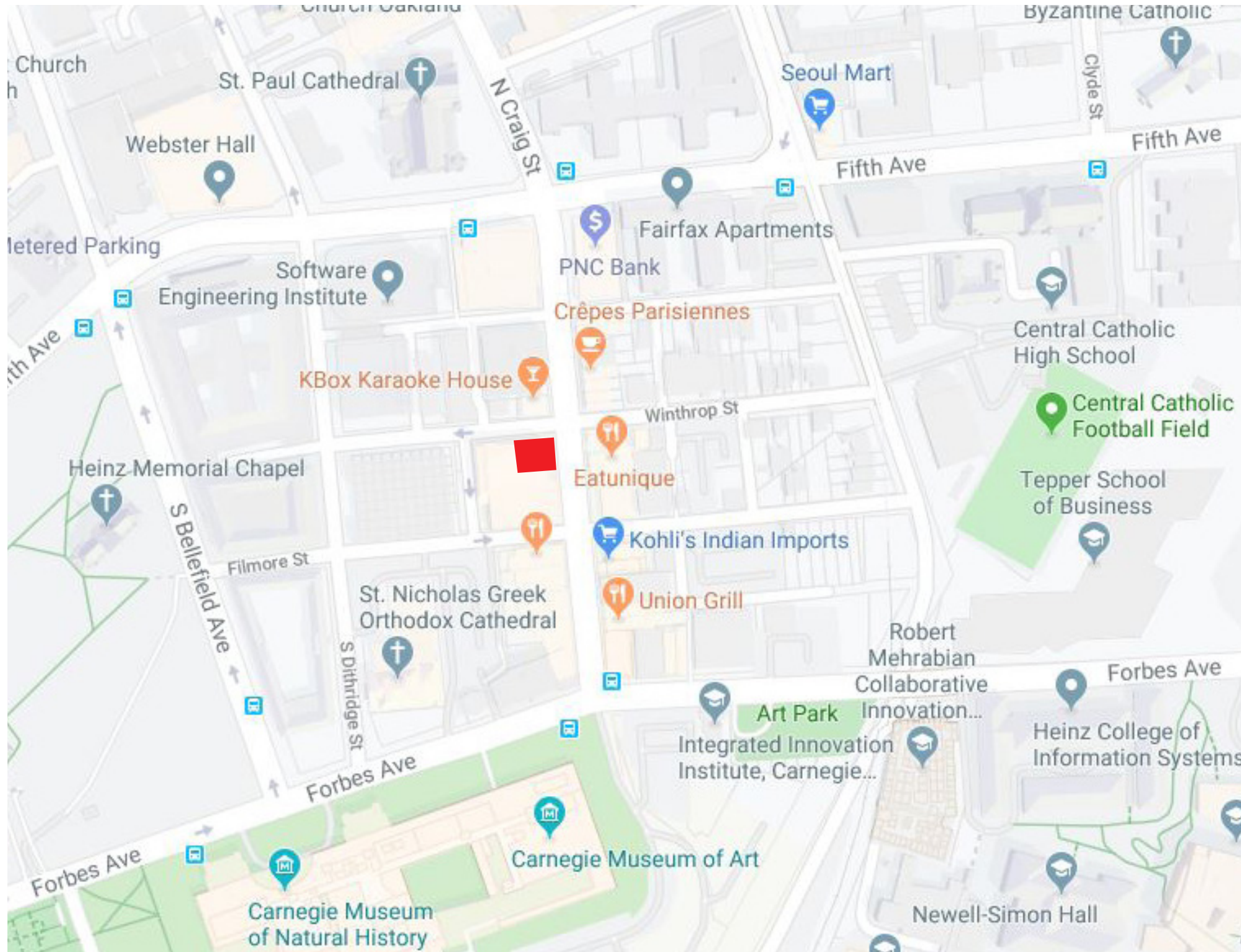


FUKU TEA
300 SOUTH CRAIG STREET

OAKLAND PLANNING & DEVELOPMENT CORPORATION MEETING
24 OCTOBER 2019





SITE MAP

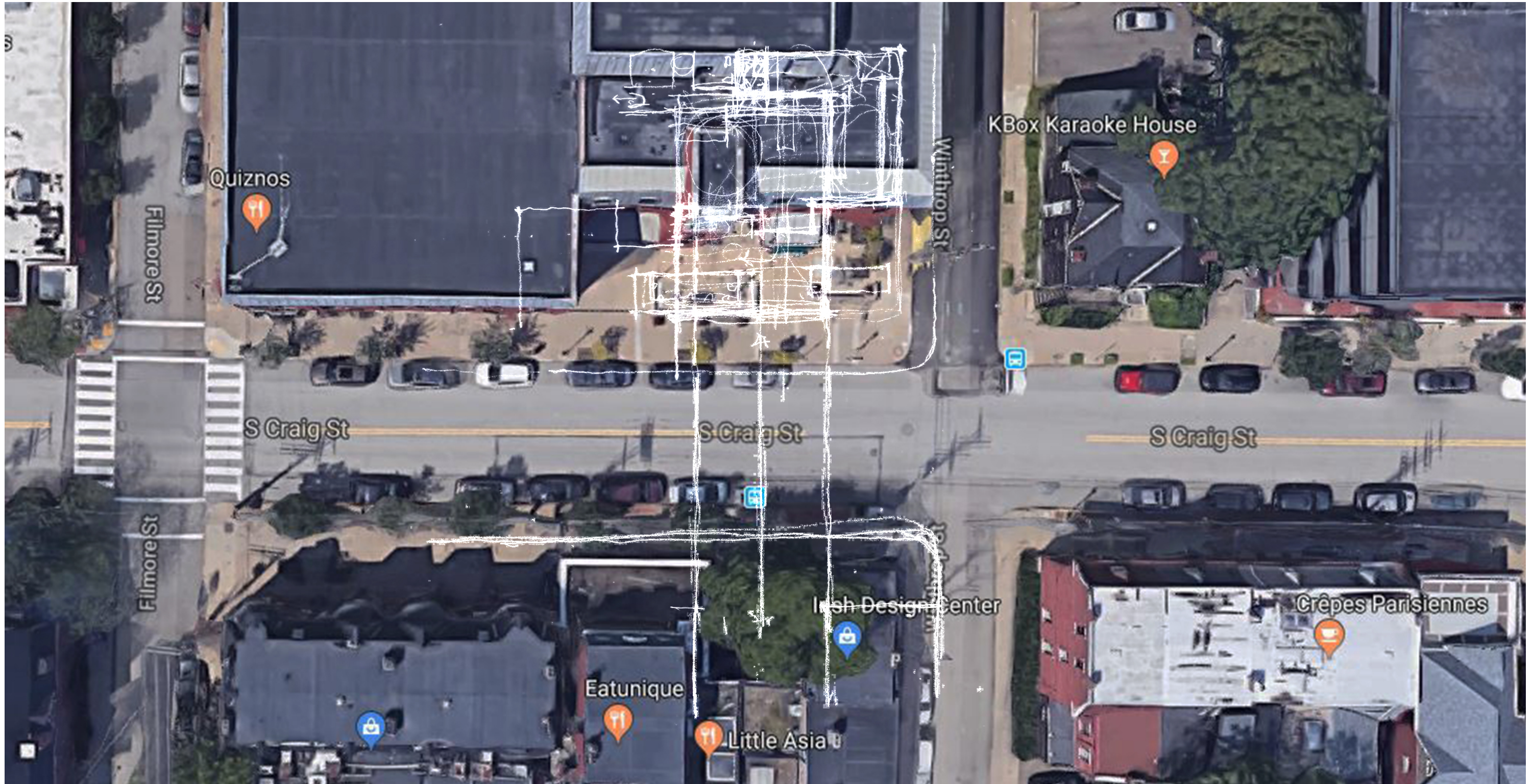
FUKU TEA 300 SOUTH CRAIG STREET

OAKLAND PLANNING & DEVELOPMENT CORPORATION MEETING
24 OCTOBER 2019

300 SOUTH CRAIG STREET

LOCATED IN AN AREA WITH
A REGISTERED COMMUNITY
ORGANIZATION (RCO)

WE ARE REQUIRED TO PRESENT TO
THE RELEVANT RCO - THE OAKLAND
PLANNING AND DEVELOPMENT
CORPORATION (OPDC) - AS A PART
OF OUR ZONING REVIEW AND
APPROVALS PROCESS.



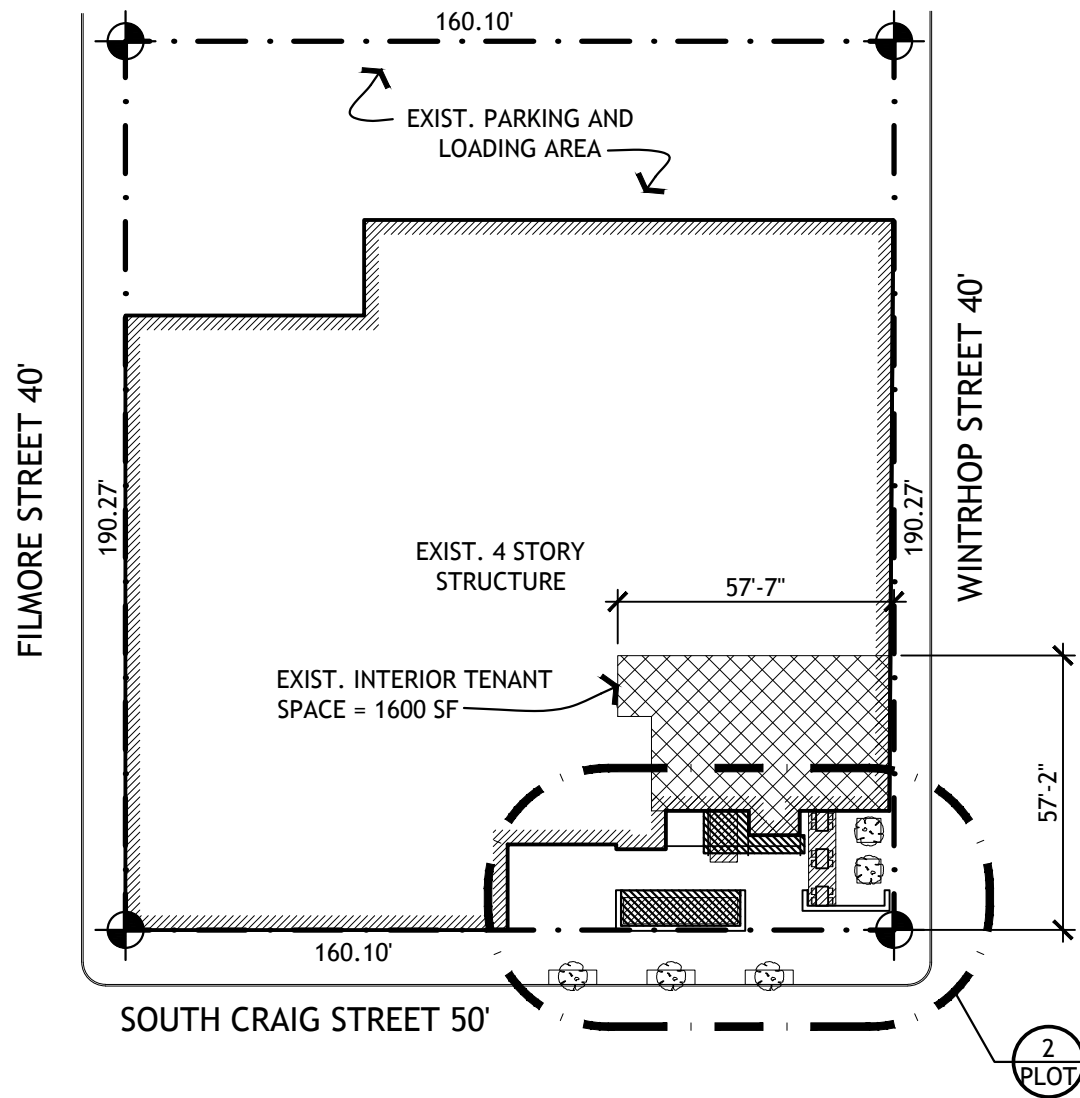
SITE ANALYSIS

FUKU TEA

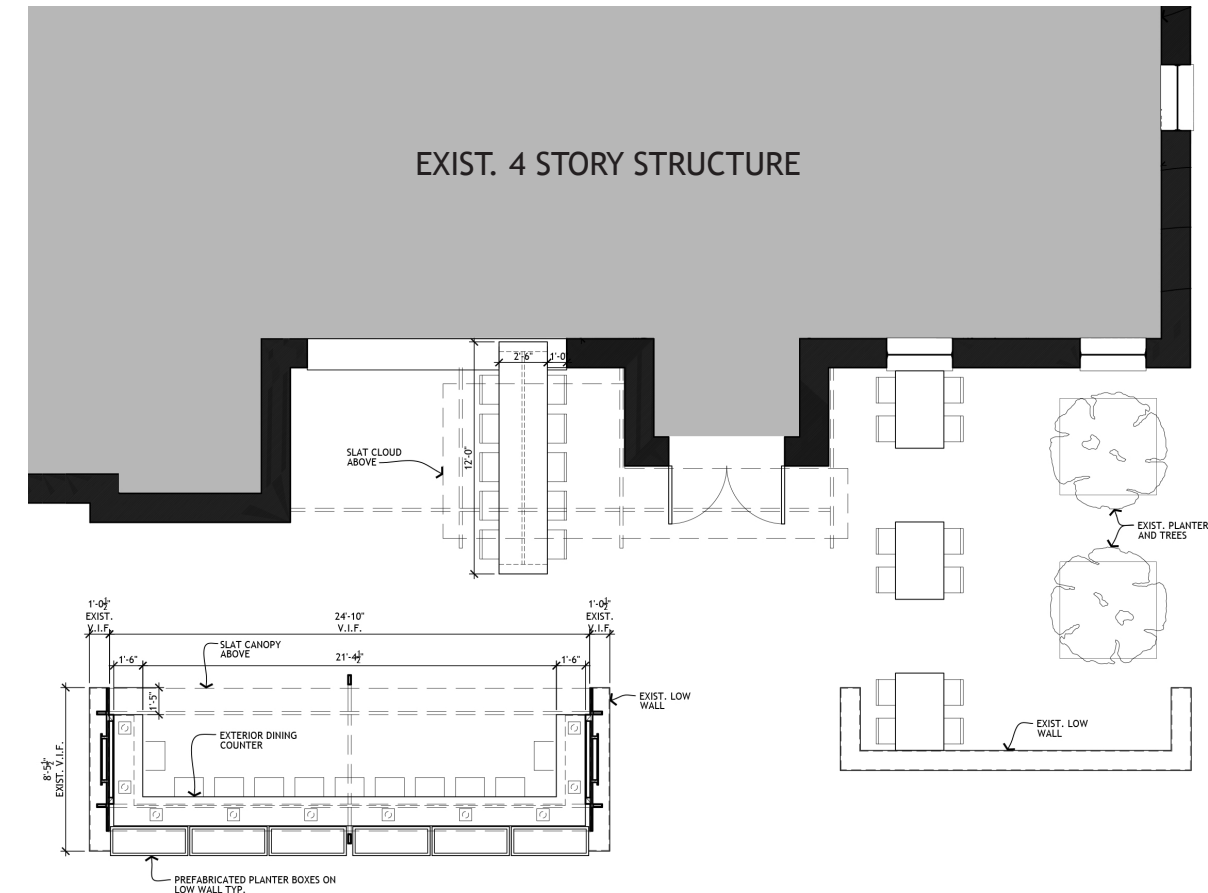
300 SOUTH CRAIG STREET

OAKLAND PLANNING & DEVELOPMENT CORPORATION MEETING

24 OCTOBER 2019



1 PLOT PLAN
 SCALE: 1" = 40'-0"
 NORTH



2 SITE PLAN
 SCALE: 1" = 10'-0"
 NORTH

FUKU TEA
300 SOUTH CRAIG STREET

OAKLAND PLANNING & DEVELOPMENT CORPORATION MEETING
 24 OCTOBER 2019



VIEW OF OUTDOOR SPACE

FUKU TEA
300 SOUTH CRAIG STREET

OAKLAND PLANNING & DEVELOPMENT CORPORATION MEETING
24 OCTOBER 2019



VIEW OF SEATING AREA AND CANOPY

FUKU TEA

300 SOUTH CRAIG STREET

OAKLAND PLANNING & DEVELOPMENT CORPORATION MEETING

24 OCTOBER 2019



VIEW FROM WINTHROP STREET

FUKU TEA
300 SOUTH CRAIG STREET

OAKLAND PLANNING & DEVELOPMENT CORPORATION MEETING
24 OCTOBER 2019





VIEW FROM CRAIG STREET

FUKU TEA
300 SOUTH CRAIG STREET

OAKLAND PLANNING & DEVELOPMENT CORPORATION MEETING
24 OCTOBER 2019





APPROACH VIEW

FUKU TEA
300 SOUTH CRAIG STREET

OAKLAND PLANNING & DEVELOPMENT CORPORATION MEETING
24 OCTOBER 2019





MATERIALS AT FUKU TEA FORBES AVENUE

FUKU TEA

300 SOUTH CRAIG STREET

OAKLAND PLANNING & DEVELOPMENT CORPORATION MEETING

24 OCTOBER 2019



MARGITTAI
ARCHITECTS



MATERIALS AT FUKU TEA FORBES AVENUE

FUKU TEA

300 SOUTH CRAIG STREET

OAKLAND PLANNING & DEVELOPMENT CORPORATION MEETING

24 OCTOBER 2019



MARGITTAI
ARCHITECTS