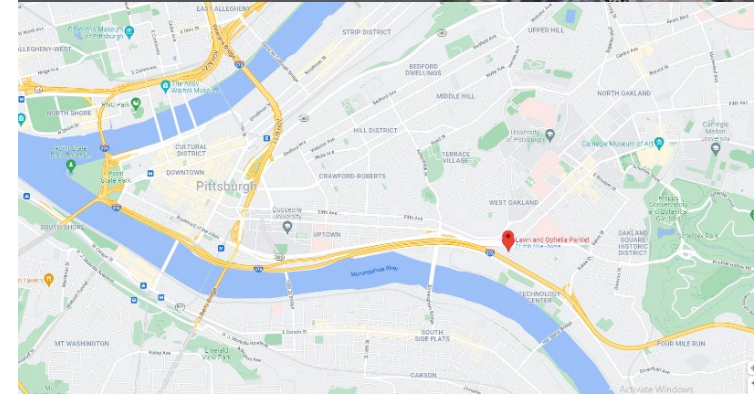
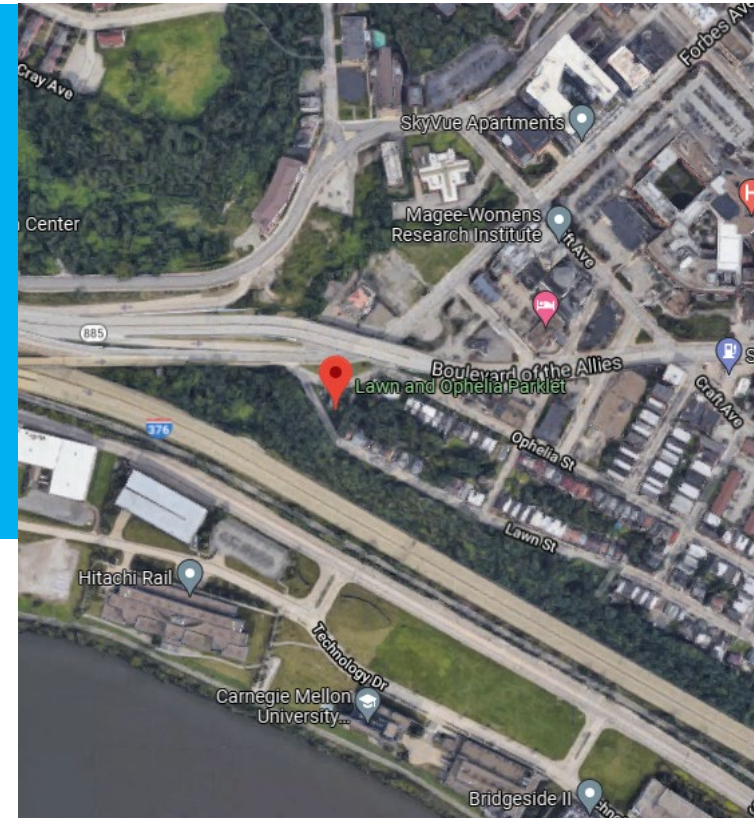


Lawn and Ophelia Green Infrastructure Project

Lawn and Ophelia Parklet
21 Lawn Street
South Oakland
Neighborhood of Pittsburgh



Presenter:
Damon Weiss, P.E.
Principal, Ethos Collaborative
damonweiss@ethoscollaborative.com



LAWN AND OPHELIA EXISTING, SURVEY PLAN

EXISTING CONDITIONS GENERAL NOTES

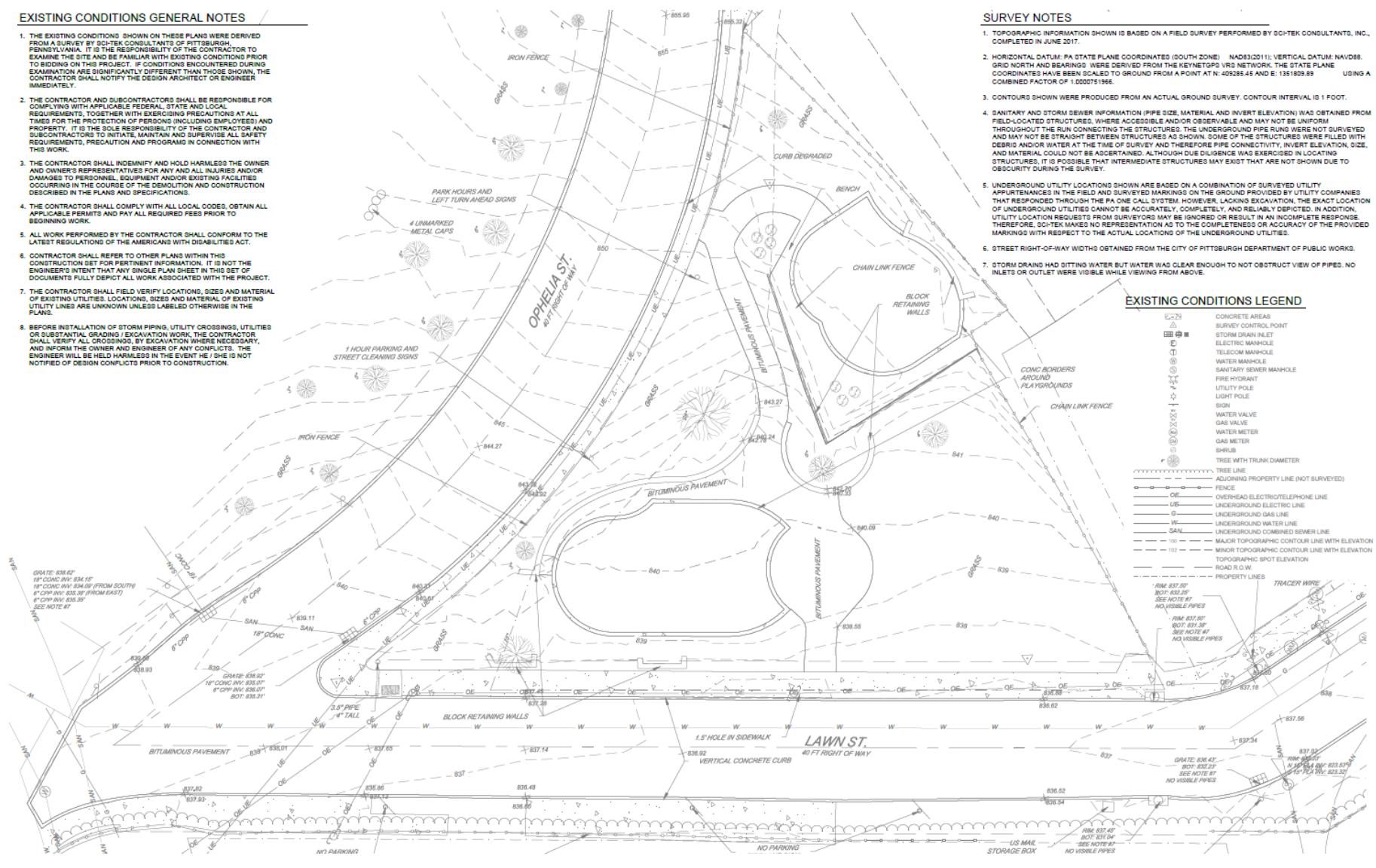
1. THE EXISTING CONDITIONS SHOWN ON THESE PLANS WERE DERIVED FROM A SURVEY BY SCITEK CONSULTANTS OF PITTSBURGH, PENNSYLVANIA. IT IS THE RESPONSIBILITY OF THE CONTRACTOR TO EXAMINE THE SITE AND BE FAMILIAR WITH EXISTING CONDITIONS PRIOR TO BIDDING ON THIS PROJECT. IF CONDITIONS ENCOUNTERED DURING EXAMINATION ARE SIGNIFICANTLY DIFFERENT THAN THOSE SHOWN, THE CONTRACTOR SHALL NOTIFY THE DESIGN ARCHITECT OR ENGINEER IMMEDIATELY.
2. THE CONTRACTOR AND SUBCONTRACTORS SHALL BE RESPONSIBLE FOR COMPLYING WITH APPLICABLE FEDERAL, STATE AND LOCAL REQUIREMENTS, TOGETHER WITH EXERCISING PRECAUTIONS AT ALL TIMES FOR THE PROTECTION OF PERSONS (INCLUDING EMPLOYEES) AND PROPERTY. IT IS THE SOLE RESPONSIBILITY OF THE CONTRACTOR AND SUBCONTRACTORS TO INITIATE, MAINTAIN AND SUPERVISE ALL SAFETY REQUIREMENTS, PRECAUTION AND PROGRAMS IN CONNECTION WITH THIS WORK.
3. THE CONTRACTOR SHALL INDEMNIFY AND HOLD HARMLESS THE OWNER AND OWNER'S REPRESENTATIVES FOR ANY AND ALL INJURIES AND/OR DAMAGES TO PERSONNEL, EQUIPMENT AND/OR EXISTING FACILITIES OCCURRING IN THE COURSE OF THE DEMOLITION AND CONSTRUCTION DESCRIBED IN THE PLANS AND SPECIFICATIONS.
4. THE CONTRACTOR SHALL COMPLY WITH ALL LOCAL CODES, OBTAIN ALL APPLICABLE PERMITS AND PAY ALL REQUIRED FEES PRIOR TO BEGINNING WORK.
5. ALL WORK PERFORMED BY THE CONTRACTOR SHALL CONFORM TO THE LATEST REGULATIONS OF THE AMERICANS WITH DISABILITIES ACT.
6. CONTRACTOR SHALL REFER TO OTHER PLANS WITHIN THIS CONSTRUCTION SET FOR PERTINENT INFORMATION. IT IS NOT THE ENGINEER'S INTENT THAT ANY SINGLE PLAN SHEET IN THIS SET OF DOCUMENTS FULLY DEPICT ALL WORK ASSOCIATED WITH THE PROJECT.
7. THE CONTRACTOR SHALL FIELD VERIFY LOCATIONS, SIZES AND MATERIAL OF EXISTING UTILITIES, LOCATIONS, SIZES AND MATERIAL OF EXISTING UTILITY LINES ARE UNKNOWN UNLESS LABELED OTHERWISE IN THE PLANS.
8. BEFORE INSTALLATION OF STORM PIPING, UTILITY CROSSINGS, UTILITIES OR SUBSTANTIAL GRADING / EXCAVATION WORK, THE CONTRACTOR SHALL VERIFY ALL CROSSINGS, BY EXCAVATION WHERE NECESSARY, AND INFORM THE OWNER AND ENGINEER OF ANY CONFLICTS. THE ENGINEER WILL BE HELD HARMLESS IN THE EVENT HE / SHE IS NOT NOTIFIED OF DESIGN CONFLICTS PRIOR TO CONSTRUCTION.

SURVEY NOTES

1. TOPOGRAPHIC INFORMATION SHOWN IS BASED ON A FIELD SURVEY PERFORMED BY SCITEK CONSULTANTS, INC., COMPLETED IN JUNE 2017.
2. HORIZONTAL DATUM: PA STATE PLANE COORDINATES (SOUTH ZONE) NAD83(2011); VERTICAL DATUM: NAVD83. GRID NORTH AND BEARINGS WERE DERIVED FROM THE KEYNETGPS VRS NETWORK. THE STATE PLANE COORDINATES HAVE BEEN SCALED TO GROUND FROM A POINT AT N: 40268.45 AND E: 1351809.89 USING A COMBINED FACTOR OF 1.0000751966.
3. CONTOURS SHOWN WERE PRODUCED FROM AN ACTUAL GROUND SURVEY. CONTOUR INTERVAL IS 1 FOOT.
4. SANITARY AND STORM SEWER INFORMATION (PIPE SIZE, MATERIAL AND INVERT ELEVATION) WAS OBTAINED FROM FIELD-LOCATED STRUCTURES, WHERE ACCESSIBLE AND/OR OBSERVABLE AND MAY NOT BE UNIFORM THROUGHOUT THE RUN CONNECTING THE STRUCTURES. THE UNDERGROUND PIPE RUNS WERE NOT SURVEYED AND MAY NOT BE STRAIGHT BETWEEN STRUCTURES AS SHOWN. SOME OF THE STRUCTURES WERE FILLED WITH DEBRIS AND/OR WATER AT THE TIME OF SURVEY AND THEREFORE PIPE CONNECTIVITY, INVERT ELEVATION, SIZE, AND MATERIAL COULD NOT BE ASCERTAINED. ALTHOUGH DUE DILIGENCE WAS EXERCISED IN LOCATING STRUCTURES, IT IS POSSIBLE THAT INTERMEDIATE STRUCTURES MAY EXIST THAT ARE NOT SHOWN DUE TO OBSCURITY DURING THE SURVEY.
5. UNDERGROUND UTILITY LOCATIONS SHOWN ARE BASED ON A COMBINATION OF SURVEYED UTILITY APPURTENANCES IN THE FIELD AND SURVEYED MARKINGS ON THE GROUND PROVIDED BY UTILITY COMPANIES THAT RESPONDED THROUGH THE PA ONE CALL SYSTEM. HOWEVER, LACKING EXCAVATION, THE EXACT LOCATION OF UNDERGROUND UTILITIES CANNOT BE ACCURATELY, COMPLETELY, AND RELIABLY DEPICTED. IN ADDITION, UTILITY LOCATION REQUESTS FROM SURVEYORS MAY BE IGNORED OR RESULT IN AN INCOMPLETE RESPONSE THEREFORE, SCITEK MAKES NO REPRESENTATION AS TO THE COMPLETENESS OR ACCURACY OF THE PROVIDED MARKINGS WITH RESPECT TO THE ACTUAL LOCATIONS OF THE UNDERGROUND UTILITIES.
6. STREET RIGHT-OF-WAY WIDTHS OBTAINED FROM THE CITY OF PITTSBURGH DEPARTMENT OF PUBLIC WORKS.
7. STORM GRASSES HAD SITTING WATER BUT WATER WAS CLEAR ENOUGH TO NOT OBSTRUCT VIEW OF PIPES. NO INLETS OR OUTLET WERE VISIBLE WHILE VIEWING FROM ABOVE.

EXISTING CONDITIONS LEGEND

	CONCRETE AREAS
	SURVEY CONTROL POINT
	STORM DRAIN INLET
	ELECTRIC MANHOLE
	TELECOM MANHOLE
	WATER MANHOLE
	SANITARY SEWER MANHOLE
	FIRE HYDRANT
	UTILITY POLE
	LIGHT POLE
	SIGN
	WATER VALVE
	GAS VALVE
	WATER METER
	GAS METER
	SHRUB
	TREE WITH TRUNK DIAMETER
	TREE LINE
	ADJOINING PROPERTY LINE (NOT SURVEYED)
	FENCE
	OVERHEAD ELECTRIC/TELEPHONE LINE
	UNDERGROUND ELECTRIC LINE
	UNDERGROUND GAS LINE
	UNDERGROUND WATER LINE
	UNDERGROUND COMBINED SEWER LINE
	MAJOR TOPOGRAPHIC CONTOUR LINE WITH ELEVATION
	MINOR TOPOGRAPHIC CONTOUR LINE WITH ELEVATION
	TOPOGRAPHIC SPOT ELEVATION
	ROAD R.O.W.
	PROPERTY LINES



GRATE: 838.62'
18" CONC INV: 834.15'
18" CONC INV: 834.09' (FROM SOUTH)
6" COP INV: 833.39' (FROM EAST)
6" COP INV: 833.35'
SEE NOTE #1

GRATE: 836.82'
18" CONC INV: 836.07'
6" COP INV: 835.07'
6" COP INV: 835.34'

GRATE: 836.47'
18" CONC INV: 833.39'
6" COP INV: 833.35'
SEE NOTE #1

GRATE: 837.00'
18" CONC INV: 833.39'
6" COP INV: 833.35'
SEE NOTE #1

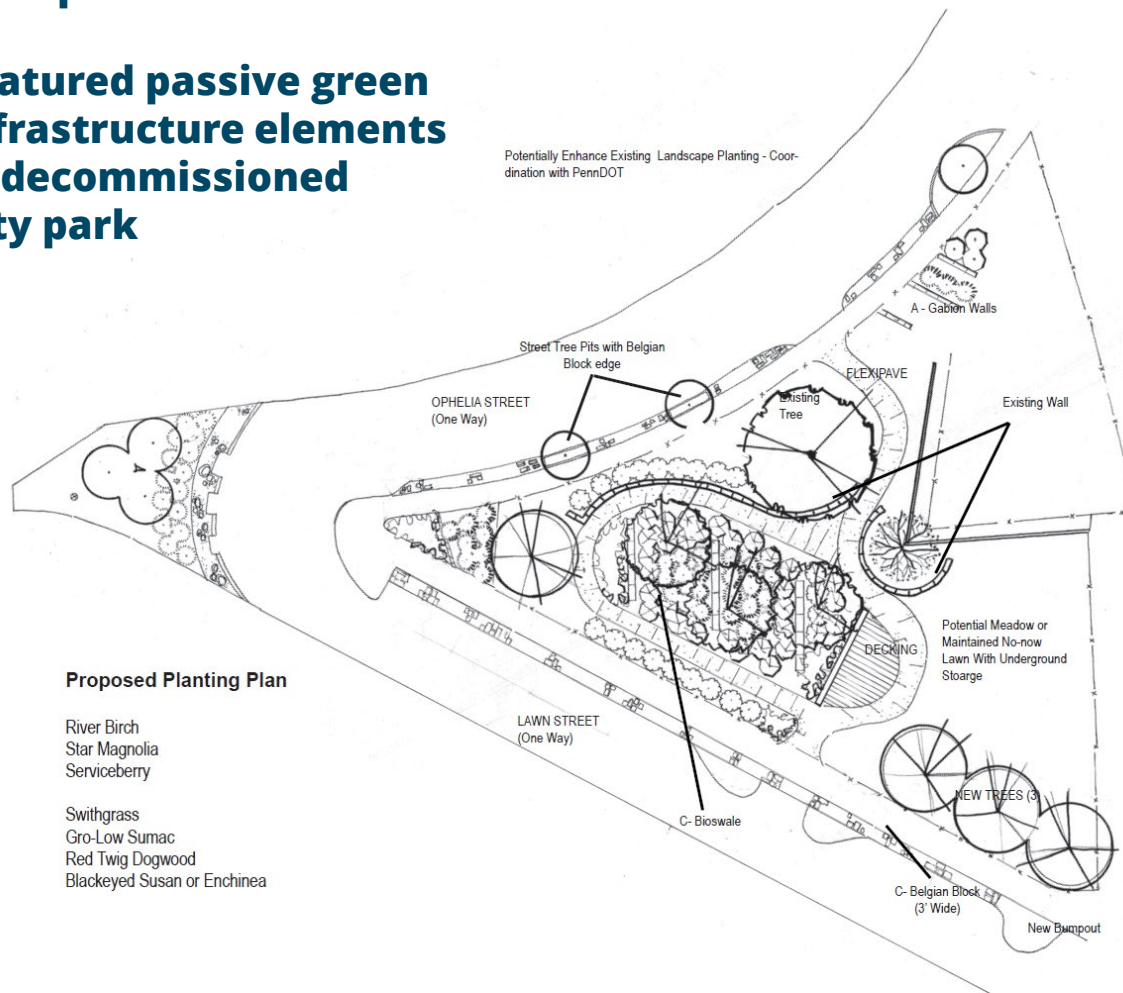
GRATE: 837.00'
18" CONC INV: 833.39'
6" COP INV: 833.35'
SEE NOTE #1

LAWN AND OPHELIA EXISTING, PHOTOS



LAWN AND OPHELIA ORIGINAL CONCEPT

- Prepared by Megan Ziegler, PWSA and Josh Lippert, City of Pittsburgh
- Incorporated into PWSA's Green First Plan
- Featured passive green infrastructure elements in decommissioned City park



A - GABION WALL



B - FLEXIPAVE PATHWAY



C - BELGIAN BLOCK AND BIOSWALE

LAWN AND OPHELIA COMMUNITY

Community Engagement occurred at least three times during design:

- July 2018, Early Design Presentation
- February 2021, Presentation of Plan Revisions to Oakcliff Community
- September 2021, Oakcliff Community Meeting Update



LAWN & OPHELIA PARKLET
community meeting
FREE & OPEN TO THE PUBLIC

Wednesday, July 11th
7 to 8 pm

OAKCLIFF
370 LAWN STREET
PITTSBURGH, PA 15213
REAR PARKING LOT ENTRANCE

The Lawn and Ophelia parklet had been re-imagined into a more naturalized public space using rain gardens, vegetated curb bump-outs, and native meadow plantings to renew the landscape of South Oakland. The design includes elements of green infrastructure, green inlets, and underground water storage that will help to alleviate stormwater runoff issues. Overall, this project aims to re-cast the space for community use while reducing combined sewer overflow events in the area.

By attending the meeting you can share your questions and insights about the plan and help strengthen the design.

Join the discussion. Share with friends. FOR MORE INFORMATION AND QUESTIONS EMAIL: LMZengler@pgh2o.com



Proposed Plan

Renderings displayed created by Studio for Spatial Practice.



Place existing path
New vegetated curb bump-out along Ophelia Street
Additional tree planting along face
New approach to public facility
New Ophelia 'belly' garden, the new stormwater storage and flow through the area
New Ophelia 'belly' garden, the new stormwater storage and flow through the area
Existing path to remain. Please avoid alterations
Accessible path from Lawn Street through meadow
New decorative paving stone garden. Consider ground with flowers. New concrete steps.
New decorative paving stone garden. Consider ground with flowers. New concrete steps.

The Lawn and Ophelia parklet had been re-imagined into a more naturalized public space using rain gardens, vegetated curb bump-outs, and native meadow plantings to renew the landscape of South Oakland. The design includes elements of green infrastructure, green inlets, and underground water storage that will help to alleviate stormwater runoff issues. Overall, this project aims to re-cast the space for community use while reducing combined sewer overflow events in the area.

The proposed design is displayed to the left. The map includes numbers that correspond to cross-sectional designs, presented at the bottom. Below, is an aerial rendering of the site.





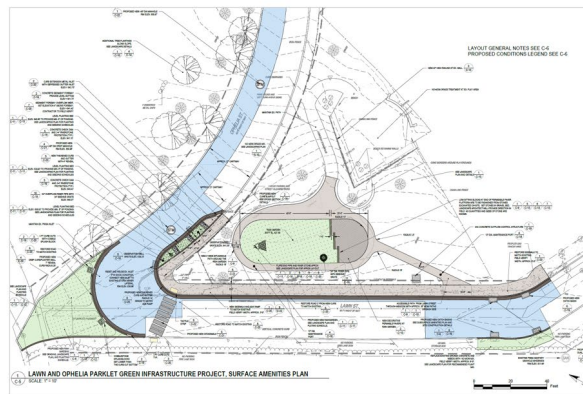

Lawn and Ophelia Parklet Improvements
Community Engagement Meeting | July 2018



Recent Plan Revisions

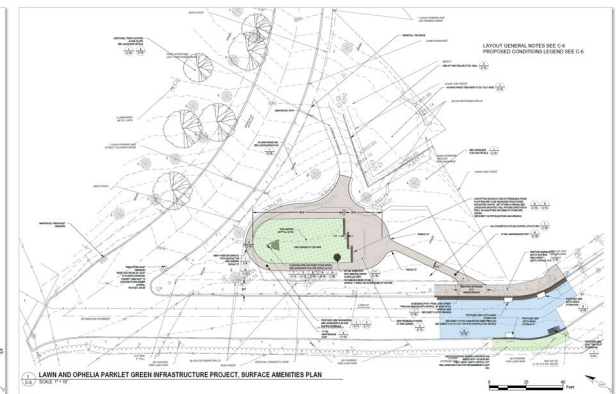
Original Plan

- Based on early design concepts by PWSA & City Planning
- Presented to Oak Cliff Community Group in July 2018



Revised Plan

- Removed curbed stormwater planter bed
- Remove low-capture rain garden at the nose
- Substantially reduced impacts to roads, sidewalks, and traffic during construction.



LAWN AND OPHELIA PREVIOUS ART COMMISSION



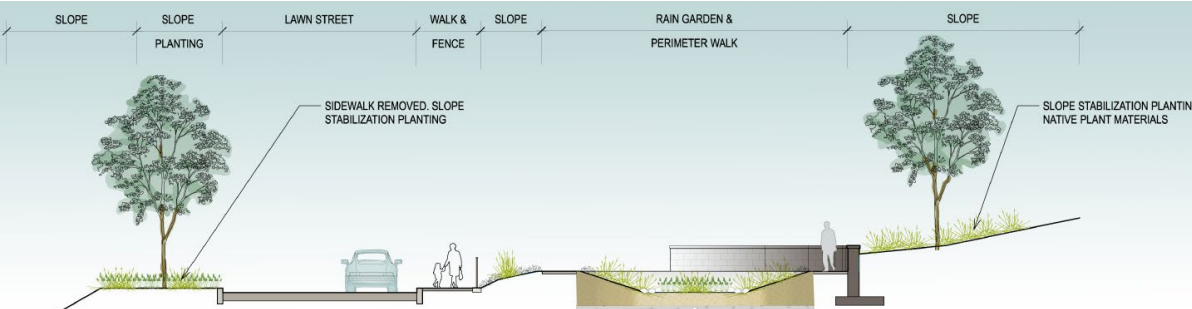
Artful Stormwater

Stormwater Planters

Planters located along street curbs are in a prime location to collect and hold stormwater directed off from the street gutter. These planters can integrate artistic and designed grates and stonework, while also utilizing a diverse range of native planting in the landscape design.

Rain Gardens

These planted basins collect and hold stormwater from impervious surfaces. Specialty plants and colorful landscape elements can be integrated into these planted depressions, while also utilizing infrastructure to slowly absorb the water either into holding tanks or directly into the groundwater.



6 SECTION THROUGH RAIN GARDEN
Scale: 1" = 10 ft



LAWN AND OPHELIA FINAL DESIGN



SANDSTONE SEAT WALLS



NO MOW FESCUE MIX



MEADOW SEED MIX



TRAIL SURFACE AGGREGATE



LAWN AND OPHELIA PLANT PALETTE

LAWN & OPHELIA PLANT PALETTE

PERENNIALS

Aster novae-angliae - New England Aster
 Elymus hystrix - Bottlebrush Grass
 Eutrochium dubium - Joe-Pye Weed
 Festuca Glauca 'Elijah Blue'- Blue Fescue
 Heliopsis helianthoides - Oxeye
 Hemerocallis- Hyperion Daylily
 Iris Versicolor- Northern Blue Flag
 Penstemon digitalis - White Beardtongue
 Rudbeckia hirta - Black-eyed Susan
 Sedum spectabile- Autumn Joy Stonecrop
 Schizachyrium scoparium- Little bluestem
 Verbena hastata - Blue Vervain

GROUNDCOVER

Gaultheria procumbens -wintergreen/teaberry

SHRUBS

Clethra alnifolia 'ruby spice'- summersweet
 Cornus sericea 'isanti'- red twig dogwood
 Ilex veticillata 'shortcake/jim dandy'- Winterberry
 Physocarpus opulifolius- Ninebark 'little devil'

TREES

Serviceberry tree
 Flowering dogwood tree
 Blackgum
 White oak



Purple Dome Aster



Bottlebrush grass



Joe-Pye weed- Little Joe



Blue Fescue



Oxeye 'Sunburst'



Hyperion Daylily



Blue Flag Iris- Iris versicolor



Husker red white beardtongue



Black-eyed Susan 'Goldsturm'



Sedum- Autumn Joy



Little bluestem



Verbena hastata - Blue Vervain



Creeping wintergreen



Flowering dogwood



Ninebark



Redtwig dogwood



Summersweet



Winterberry



Serviceberry



Blackgum fall color



White oak

BEFORE AND AFTER OF PARKLET

