

TRAFFIC CONTROL GENERAL NOTES

1. THIS WORK CONSISTS OF THE MAINTENANCE OF TRAFFIC AND THE PROTECTION OF THE TRAVELING PUBLIC APPROACHING THE CONSTRUCTION AREA AND WITHIN THE LIMITS OF CONSTRUCTION.
2. FURNISH, ERECT, PLACE, AND MAINTAIN TRAFFIC CONTROL SIGNS AND DEVICES AND MAINTAIN TRAFFIC DURING HOURS OF CONSTRUCTION AND AT ALL TIMES IN ACCORDANCE WITH THE METHODS INDICATED ON THESE DRAWINGS AND:

1. THE SPECIAL PROVISIONS OF THE CONTRACT.

2. PA CODE, TITLE 67, CHAPTER 212, OFFICIAL TRAFFIC CONTROL DEVICES (MARCH 2006).

3. PENNDOT PUBLICATION 213, TEMPORARY TRAFFIC CONTROL GUIDELINES (JUNE 2014 EDITION).

4. PENNDOT PUBLICATION 236, HANDBOOK OF APPROVED SIGNS (NOVEMBER 19, 2013).

5. PENNDOT PUBLICATION 35, APPROVED CONSTRUCTION MATERIALS (BULLETIN 15).

6. PENNDOT PUBLICATION 46, TRAFFIC ENGINEERING MANUAL (MARCH 3, 2014).

7. PENNDOT PUBLICATION 111, TRAFFIC CONTROL. PAVEMENT MARKINGS AND SIGNAGE STANDARDS TC 8600, TC-8700, SERIES (JUNE 17, 2013).

8. PENNDOT PUBLICATION 148, TRAFFIC STANDARDS SIGNALS TC-8800 SERIES (DECEMBER 12, 2011).

9. PENNDOT PUBLICATION 149, TRAFFIC SIGNAL DESIGN HANDBOOK (MAY 2013).

10. PENNDOT PUBLICATION 408, SPECIFICATIONS (APRIL 2015 EDITION).

11. FEDERAL HIGHWAY ADMINISTRATION MANUAL OF UNIFORM TRAFFIC CONTROL DEVICES (MUTCD) (2009 EDITION WITH REVISIONS 1 AND 2, MAY 2012).
3. IMMEDIATELY UPON COMPLETION OF THE WORK, REMOVE THE DEVICES AND SIGNS. FOR TYPE B MOUNTED SIGNS, REMOVE POSTS COMPLETELY. THE CITY MUST BE NOTIFIED TO REMOVE ANY TRAFFIC CONTROL DEVICES ERECTED BY CITY FORCES.
4. PROTECT ANY EXCAVATIONS, OBSTRUCTIONS, OR CONSTRUCTION SO AS NOT TO EXPOSE ANY PEDESTRIAN HAZARDS.
5. DURING NON-WORKING DAYS, USE PENNDOT APPROVED STEEL PLATES TO COVER ANY EXCAVATION AND OPEN THE ROAD TO TRAFFIC UNLESS OTHERWISE DIRECTED.
6. REPLACE ALL SIGNS OR POSTS DAMAGED DURING REMOVAL OR INSTALLATION.
7. THESE PLANS ARE NOT INTENDED TO RELIEVE THE CONTRACTOR OF HIS RESPONSIBILITY FOR THE PROTECTION OF THE PUBLIC AND CONSTRUCTION PERSONNEL. THE STANDARDS PRESCRIBED HEREIN ARE MINIMUM AND ADDITIONAL PROTECTION MAY BE NEEDED IF UNANTICIPATED CONDITIONS ARE ENCOUNTERED DURING THE LIFE OF THE PROJECT. THE CONTRACTOR IS EXPECTED TO CONSTANTLY REVIEW THESE PLANS FOR ADEQUACY AND TO RECOMMEND CHANGES FOR THE ENGINEER S APPROVAL WHEN INADEQUACIES ARE DISCOVERED.
8. THE TRAFFIC CONTROL DEVICES SHOWN DEPICT THE MINIMUM NUMBER OF DEVICES REQUIRED.
9. MOUNT ALL W-SERIES SIGNS, LONG TERM SIGNS ON TYPE III BARRICADES UNLESS NOTED, SHOWN, OR DIRECTED. MOUNT ALL OTHER SIGNS ON TYPE B POSTS UNLESS NOTED, SHOWN, OR DIRECTED.
10. USE NEW SIGNS AND DEVICES AT THE BEGINNING OF THE PROJECT AND MAINTAINED OR REPLACED SAME TO CITY OF PITTSBURGH DPW SATISFACTION THROUGHOUT THE PROJECT DURATION.
11. NOTIFY LOCAL EMERGENCY AUTHORITIES (E.G. POLICE, FIRE, MEDICAL), AFFECTED POST OFFICES, BUSINESSES, SCHOOL DISTRICTS, AUTOMATED PERMIT ROUTING ANALYSIS SYSTEM (ARAS) COORDINATOR AT LEAST 14 DAYS PRIOR TO ANY SIGNIFICANT TRAFFIC IMPACTS (E.G. LATERAL RESTRICTION WITH LESS THAN 16 FEET).
12. PERFORM ALL WORK WITHIN LEGAL RIGHT-OF-WAY.
13. UNLESS OTHERWISE APPROVED OR DIRECTED, TRAFFIC RESTRICTIONS WILL NOT BE PERMITTED BETWEEN THE HOURS OF 6:00 AM TO 9:00 AM AND 3:00 PM TO 6:00 PM.
14. THE CONTRACTOR HAS THE OPTION TO SUBMIT ALTERNATIVE TRAFFIC CONTROL PLANS FOR CONSIDERATION. THESE PLANS SHALL BE SIGNED AND SEALED BY A PROFESSIONAL ENGINEER REGISTERED IN THE COMMONWEALTH OF PENNSYLVANIA, AND SHALL BE CONSISTENT WITH THE STANDARD DESIGN PRACTICES. THE DEPARTMENT WILL ALLOW NO CONSTRUCTION ACTIVITY UNTIL THE CONTRACTOR'S ULTIMATE PLAN FOR ADEQUACY AND RECOMMENDED CHANGES FOR DEPARTMENTAL APPROVAL WHEN INADEQUACIES ARE DISCOVERED.
15. REMOVE ALL CONFLICTING PAVEMENT MARKINGS (TEMPORARY AND EXISTING) IN AN APPROVED MANNER AND REPLACE UPON COMPLETION OF THE PROJECT IN KIND UNLESS OTHERWISE SPECIFIED.
16. COVER OR REMOVE ALL SIGNS NOT IN USE AND ALL CONFLICTING SIGNS. WHEN USING TAPE TO COVER SIGNS, TAPE MUST NOT CONTACT FACE OF SIGN.
17. UTILIZE PERMANENT SIGNING AND PAVEMENT MARKINGS WHERE APPLICABLE IN THE MPT PLANS.
18. THE CONTRACTOR IS RESPONSIBLE FOR MAINTAINING ACCESS TO ALL BUSINESSES, DWELLINGS, AND PARKS DURING ALL PHASES OF CONSTRUCTION.
19. THIS WORK CONSISTS OF THE MAINTENANCE OF TRAFFIC AND PROTECTION OF THE TRAVELING PUBLIC ACCOMMODATIONS APPROACHING THE CONSTRUCTION AREA AND WITHIN THE LIMITS OF CONSTRUCTION.
20. ALL DISTANCES MAY BE ADJUSTED UPWARD SLIGHTLY TO FIT FIELD CONDITIONS.

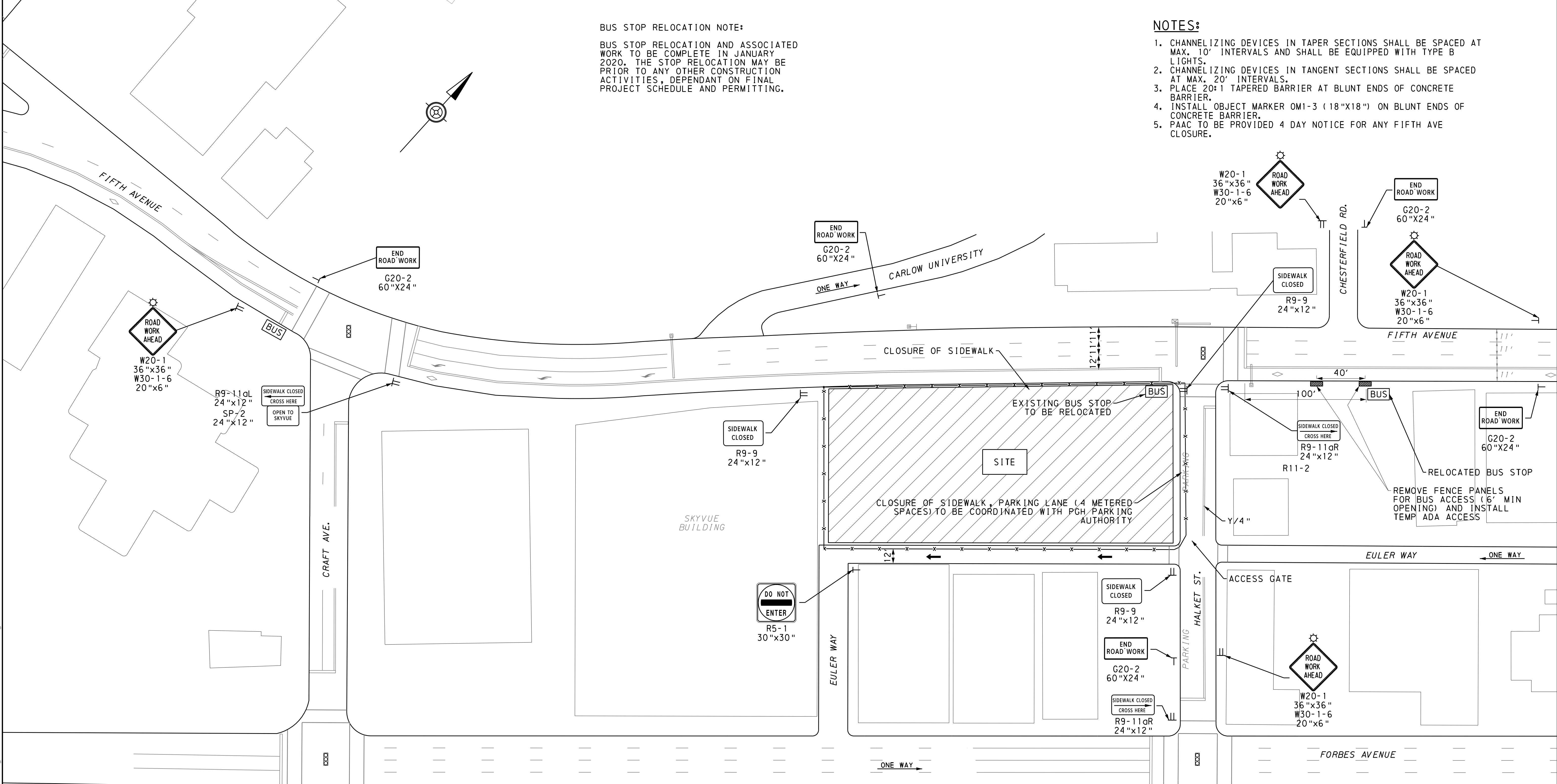
21. ANY SPECIAL SIGNS ARE TO BE FABRICATED IN ACCORDANCE WITH CURRENT PENNDOT TC STANDARDS 8700C, DATED JUNE 17, 2013 AND TC-8701D, DATED JUNE 17, 2013.
22. ATTACH TYPE C LIGHTS TO DRUMS USED TO PROTECT OPEN EXCAVATIONS ADJACENT TO THE ROADWAY. PLACE THE TYPE C LIGHTS ON EVERY THIRD DRUM.
23. SUBMIT PROPOSED REVISIONS OF THE TRAFFIC CONTROL PLANS TO THE CITY OF PITTSBURGH AND OTHER STAKEHOLDERS AS NOTED OR DIRECTED FOR APPROVAL TWO (2) WEEKS PRIOR TO BEGINNING WORK.
24. ALL CHANNELIZING DEVICES SHALL BE RETROREFLECTIVE WHEN USING NIGHTTIME OPERATIONS.
25. ALL SIGNS AND TRAFFIC CONTROL DEVICES WILL BE REFLECTORIZED WITH MATERIAL THAT MEETS PENNDOT SPECIFICATIONS FOR SHEET METAL REFLECTIVE MATERIAL.
26. NON-METALLIC DRUMS WILL BE THE ONLY ACCEPTABLE CHANNELIZING DEVICE FOR USE ON OVERNIGHT OR LONG TERM OPERATIONS INVOLVING LANE CLOSURE OF DELINEATIONS EXCEPT AS NOTED OR DIRECTED.
27. THE CONTRACTOR SHALL HAVE A SUFFICIENT AMOUNT OF THE FOLLOWING SIGNS AVAILABLE IN CASE THEIR USE BECOMES NECESSARY: W3-4 "BE PREPARED TO STOP" AND W20-7A "FLAGGER SYMBOL". THESE SIGNS ARE NOT INTENDED TO BE PART OF THE REQUIRED NORMAL TRAFFIC CONTROL OR A SUPPLEMENT THERETO.
28. THE CONTRACTOR SHALL BE RESPONSIBLE FOR PERFORMING DAILY INSPECTIONS INCLUDING WEEKENDS AND HOLIDAYS WITH SOME INSPECTIONS AT NIGHT OF THE TRAFFIC CONTROL DEVICE INSTALLATIONS ON THE PROJECT INCLUDING TEMPORARY SIGNALS.
29. TRAFFIC CONTROL DEVICES MUST COMPLY WITH THE MOST CURRENT NCCRRHP 350 CRITERIA.
30. REPORT ALL TRAFFIC INCIDENTS WITHIN THE PROJECT LIMITS TO THE DISTRICT TRAFFIC ENGINEER BY COPY OF THE TRAFFIC ACCIDENT REPORT FROM THE LOCAL POLICE.
31. THE CONTRACTOR SHALL OBTAIN ALL NECESSARY PERMITS FROM THE CITY OF PITTSBURGH PRIOR TO INSTALLING ANY TRAFFIC CONTROL DEVICES FOR THE PROJECT. NO PERMITS SHALL BE ISSUED UNTIL THE TRAFFIC CONTROL PLANS HAVE BEEN APPROVED BY THE CITY OF PITTSBURGH.
32. THE CONTRACTOR IS RESPONSIBLE FOR CONTACTING THE PA ONE-CALL SYSTEM, INC. AT 1-800-242-1776 AT LEAST THREE (3) WORKING DAYS PRIOR TO DIGGING. PA ONE-CALL SHOULD BE CONTACTED BEFORE ANY SIGN POST ANCHOR IS DRIVEN INTO THE GROUND FOR ANY TEMPORARY AND/OR PERMANENT SIGNING.
33. BLOCKING DOORWAYS AND DRIVEWAYS TO BUSINESSES, RESIDENCES, AND INSTITUTIONS WITH CONSTRUCTION EQUIPMENT OR MATERIAL IS PROHIBITED AT ALL TIMES.
34. ANY REMOVED OR ALTERED PAVEMENT MARKINGS ON CITY STREETS MUST BE RETURNED TO THEIR ORIGINAL LAYOUT UPON COMPLETION OF THE PROJECT.
35. THE CONTRACTOR IS RESPONSIBLE FOR THE MAINTENANCE OF BOTH SIGNS AND PAVEMENT MARKINGS IN THE PROJECT AREA FOR THE DURATION OF CONSTRUCTION.

REV.	DATE	DESCRIPTION	P. M.	OPER.
DESIGNED	JAB	8/13/19	PROJECT NO.	WALNU00-19150
DRAWN	JAB	8/14/19	PROJECT:	
CHECKED	CDE	8/19/19		3342 FIFTH AVENUE
REVISED			TITLE:	
APPROVED				
PROJ. MGR.				
OPERATOR				

FILE NAME: P:\wainu00\19150_3342 Fifth Ave TCP\Working\19150_3342 Fifth Ave TCP.dgn PLOTTED: 10/29/2019

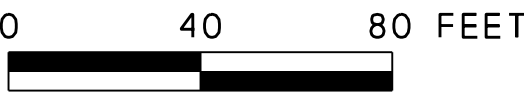
BUS STOP RELOCATION NOTE:
BUS STOP RELOCATION AND ASSOCIATED WORK TO BE COMPLETE IN JANUARY 2020. THE STOP RELOCATION MAY BE PRIOR TO ANY OTHER CONSTRUCTION ACTIVITIES, DEPENDANT ON FINAL PROJECT SCHEDULE AND PERMITTING.

- NOTES:
1. CHANNELIZING DEVICES IN TAPER SECTIONS SHALL BE SPACED AT MAX. 10' INTERVALS AND SHALL BE EQUIPPED WITH TYPE B LIGHTS.
 2. CHANNELIZING DEVICES IN TANGENT SECTIONS SHALL BE SPACED AT MAX. 20' INTERVALS.
 3. PLACE 20:1 TAPERED BARRIER AT BLUNT ENDS OF CONCRETE BARRIER.
 4. INSTALL OBJECT MARKER OM1-3 (18"x18") ON BLUNT ENDS OF CONCRETE BARRIER.
 5. PAAC TO BE PROVIDED 4 DAY NOTICE FOR ANY FIFTH AVE CLOSURE.



LEGEND

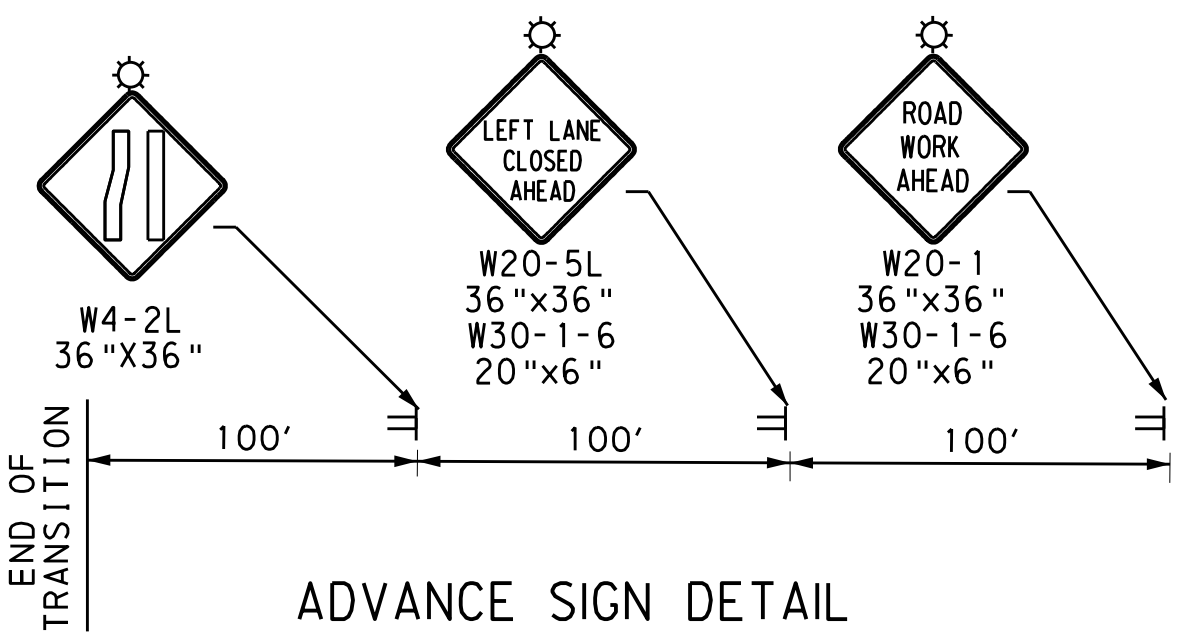
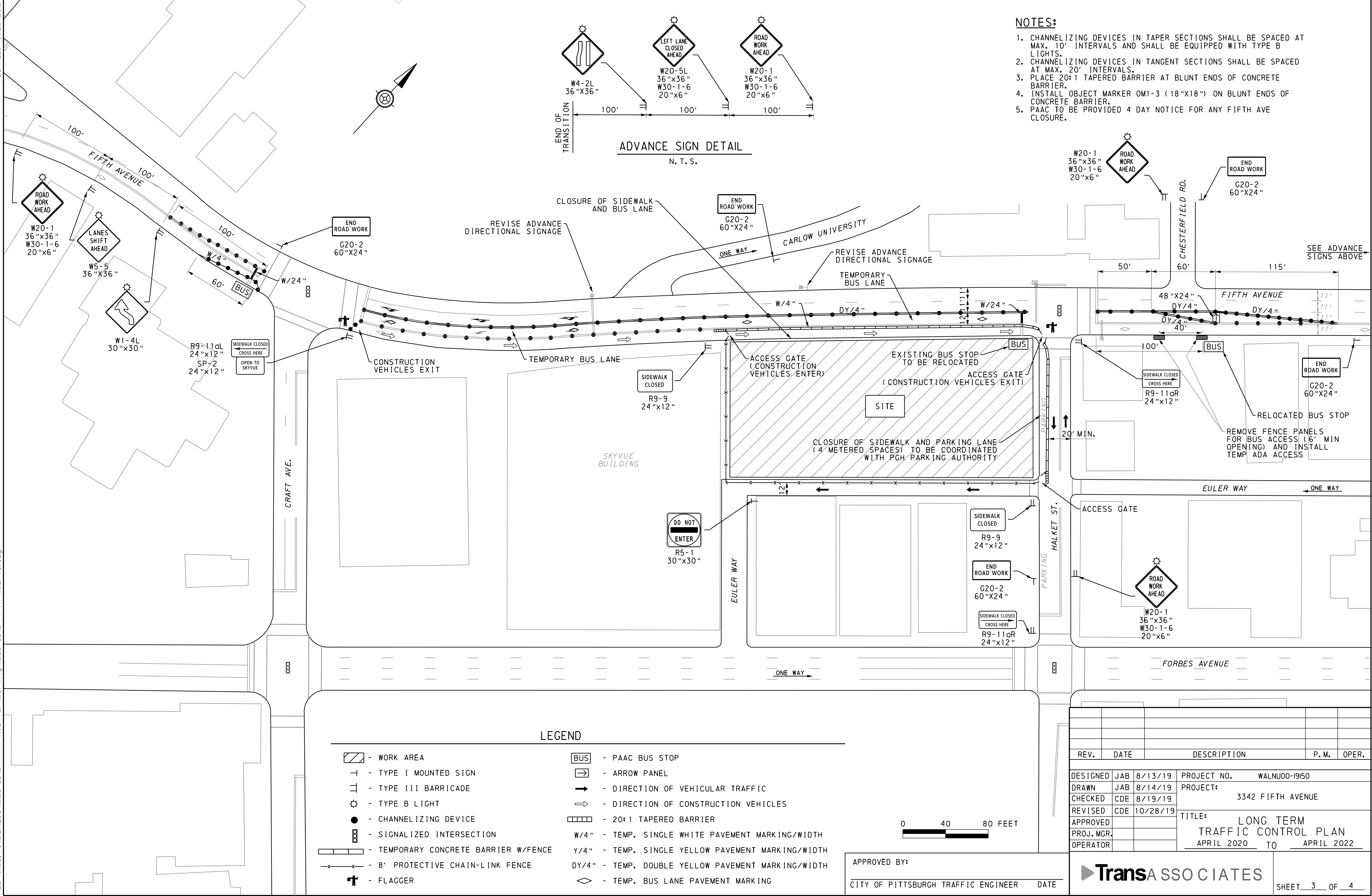
- WORK AREA
- TYPE I MOUNTED SIGN
- TYPE III BARRICADE
- TYPE B LIGHT
- CHANNELIZING DEVICE
- SIGNALIZED INTERSECTION
- TEMPORARY CONCRETE BARRIER W/FENCE
- 8' PROTECTIVE CHAIN-LINK FENCE
- FLAGGER

- PAAC BUS STOP- ARROW PANEL- DIRECTION OF VEHICULAR TRAFFIC- DIRECTION OF CONSTRUCTION VEHICLES- 20:1 TAPERED BARRIER- W/4" - TEMP. SINGLE WHITE PAVEMENT MARKING/WIDTH- Y/4" - TEMP. SINGLE YELLOW PAVEMENT MARKING/WIDTH- DY/4" - TEMP. DOUBLE YELLOW PAVEMENT MARKING/WIDTH- TEMP. BUS LANE PAVEMENT MARKING

APPROVED BY: _____
CITY OF PITTSBURGH TRAFFIC ENGINEER DATE _____

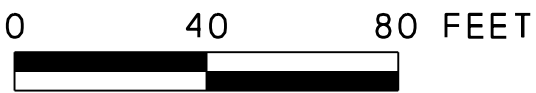
REV.	DATE	DESCRIPTION		P. M.	OPER.
DESIGNED	JAB 8/13/19	PROJECT NO. WALNU00-19150			
DRAWN	JAB 8/14/19	PROJECT: 3342 FIFTH AVENUE			
CHECKED	CDE 8/19/19	TITLE: LONG TERM TRAFFIC CONTROL PLAN			
REVISED	CDE 9/20/19				
APPROVED		JANUARY 2020 TO APRIL 2020			
PROJ. MGR.					
OPERATOR					

Trans ASSOCIATES



- NOTES:**
1. CHANNELIZING DEVICES IN TAPER SECTIONS SHALL BE SPACED AT MAX. 10' INTERVALS AND SHALL BE EQUIPPED WITH TYPE B LIGHTS.
 2. CHANNELIZING DEVICES IN TANGENT SECTIONS SHALL BE SPACED AT MAX. 20' INTERVALS.
 3. PLACE 20:1 TAPERED BARRIER AT BLUNT ENDS OF CONCRETE BARRIER.
 4. INSTALL OBJECT MARKER OM1-3 (18"x18") ON BLUNT ENDS OF CONCRETE BARRIER.
 5. PAAC TO BE PROVIDED 4 DAY NOTICE FOR ANY FIFTH AVE CLOSURE.

LEGEND	
	- WORK AREA
	- TYPE I MOUNTED SIGN
	- TYPE III BARRICADE
	- TYPE B LIGHT
	- CHANNELIZING DEVICE
	- SIGNALIZED INTERSECTION
	- TEMPORARY CONCRETE BARRIER W/FENCE
	- 8' PROTECTIVE CHAIN-LINK FENCE
	- FLAGGER
	- PAAC BUS STOP
	- ARROW PANEL
	- DIRECTION OF VEHICULAR TRAFFIC
	- DIRECTION OF CONSTRUCTION VEHICLES
	- 20:1 TAPERED BARRIER
	- TEMP. SINGLE WHITE PAVEMENT MARKING/WIDTH
	- TEMP. SINGLE YELLOW PAVEMENT MARKING/WIDTH
	- TEMP. DOUBLE YELLOW PAVEMENT MARKING/WIDTH
	- TEMP. BUS LANE PAVEMENT MARKING



APPROVED BY: _____
CITY OF PITTSBURGH TRAFFIC ENGINEER DATE

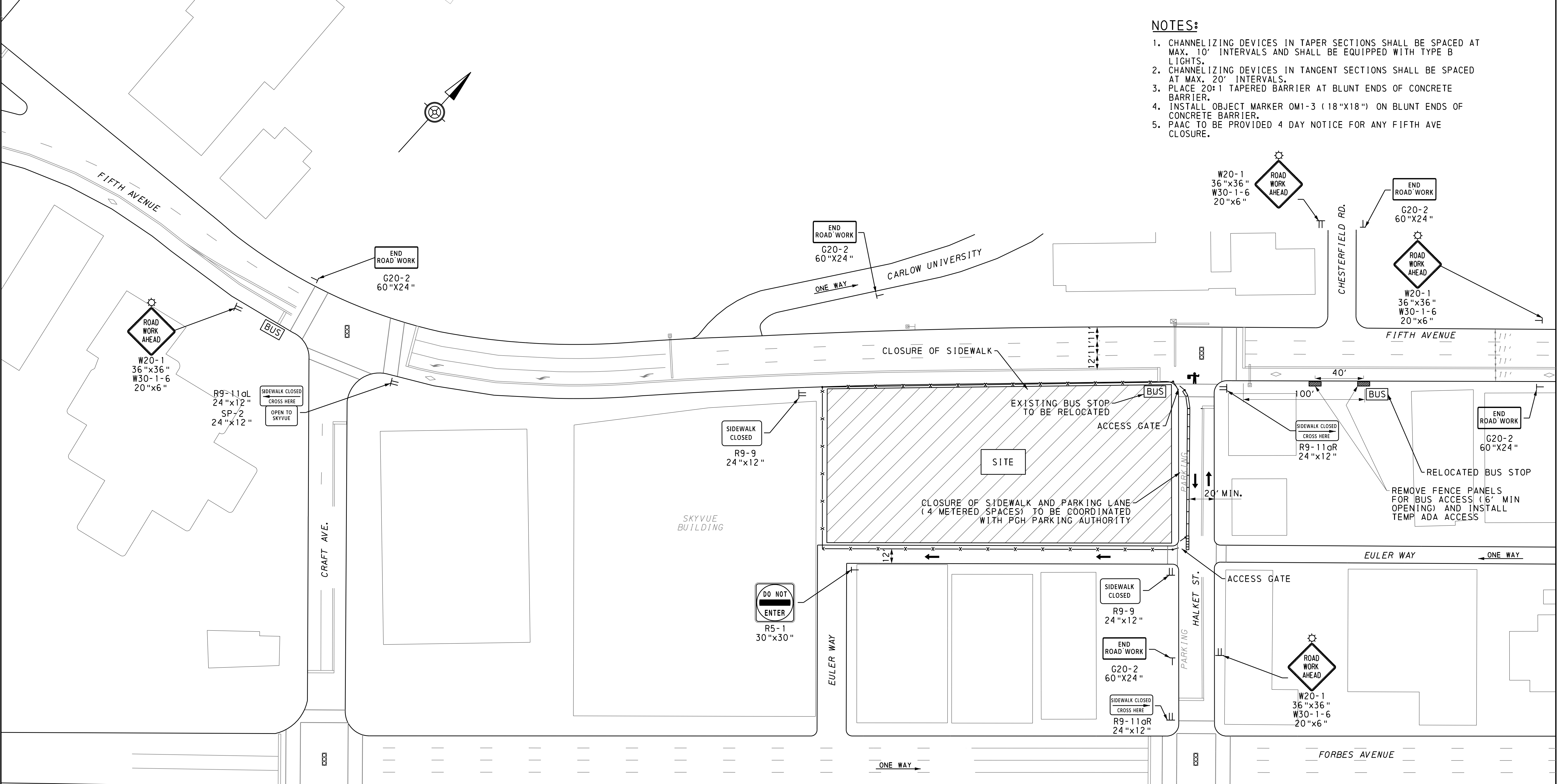
REV.	DATE	DESCRIPTION	P. M.	OPER.
DESIGNED	JAB 8/13/19	PROJECT NO. WALNU00-19150		
DRAWN	JAB 8/14/19	PROJECT: 3342 FIFTH AVENUE		
CHECKED	CDE 8/19/19			
REVISED	CDE 10/28/19			
APPROVED		TITLE: LONG TERM TRAFFIC CONTROL PLAN		
PROJ. MGR.		APRIL 2020 TO APRIL 2022		
OPERATOR				

Trans ASSOCIATES

FILE NAME: P:\wainu00\19150_3342 Fifth Ave TCP\Working\19150_3342 Fifth Ave TCP.dgn PLOTTED: 10/29/2019

NOTES:

1. CHANNELIZING DEVICES IN TAPER SECTIONS SHALL BE SPACED AT MAX. 10' INTERVALS AND SHALL BE EQUIPPED WITH TYPE B LIGHTS.
2. CHANNELIZING DEVICES IN TANGENT SECTIONS SHALL BE SPACED AT MAX. 20' INTERVALS.
3. PLACE 20:1 TAPERED BARRIER AT BLUNT ENDS OF CONCRETE BARRIER.
4. INSTALL OBJECT MARKER OM1-3 (18"x18") ON BLUNT ENDS OF CONCRETE BARRIER.
5. PAAC TO BE PROVIDED 4 DAY NOTICE FOR ANY FIFTH AVE CLOSURE.



LEGEND

- | | |
|--------------------------------------|--|
| - WORK AREA | - PAAC BUS STOP |
| - TYPE I MOUNTED SIGN | - ARROW PANEL |
| - TYPE III BARRICADE | - DIRECTION OF VEHICULAR TRAFFIC |
| - TYPE B LIGHT | - DIRECTION OF CONSTRUCTION VEHICLES |
| - CHANNELIZING DEVICE | - 20:1 TAPERED BARRIER |
| - SIGNALIZED INTERSECTION | - TEMP. SINGLE WHITE PAVEMENT MARKING/WIDTH |
| - TEMPORARY CONCRETE BARRIER W/FENCE | - TEMP. SINGLE YELLOW PAVEMENT MARKING/WIDTH |
| - 8' PROTECTIVE CHAIN-LINK FENCE | - TEMP. DOUBLE YELLOW PAVEMENT MARKING/WIDTH |
| - FLAGGER | - TEMP. BUS LANE PAVEMENT MARKING |

0 40 80 FEET

APPROVED BY: _____
CITY OF PITTSBURGH TRAFFIC ENGINEER DATE _____

REV.	DATE	DESCRIPTION	P. M.	OPER.
DESIGNED	JAB 8/13/19	PROJECT NO. WALNU00-19150		
DRAWN	JAB 8/14/19	PROJECT: 3342 FIFTH AVENUE		
CHECKED	CDE 8/19/19			
REVISED	CDE 10/28/19			
APPROVED		TITLE: LONG TERM TRAFFIC CONTROL PLAN		
PROJ.MGR.		APRIL 2022 TO AUGUST 2022		
OPERATOR				

Trans ASSOCIATES

SHEET 4 OF 4